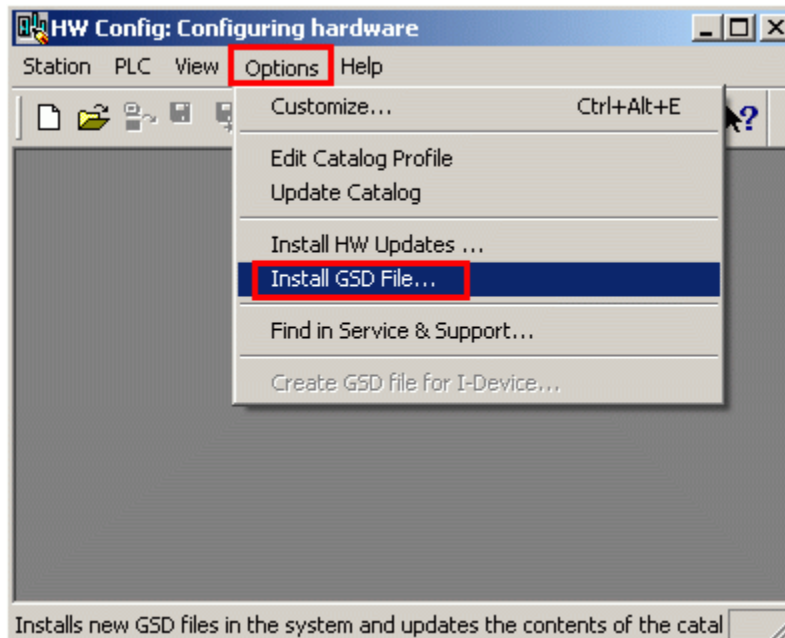
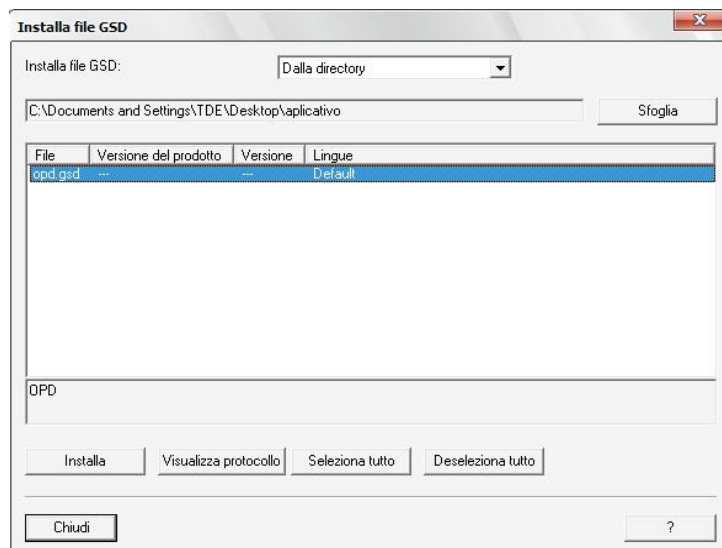


## 1. Setting of SIMATIC MANAGER STEP7

- Ensure that you can access the GSD files to be integrated via the directory on your PG/PC. The files should be located on the hard disk, on a floppy disk or CD, or even in a STEP 7 project.
- Open the HW Config and close the project opened in it.
- Select the menu command "Options > Install GSD file...".

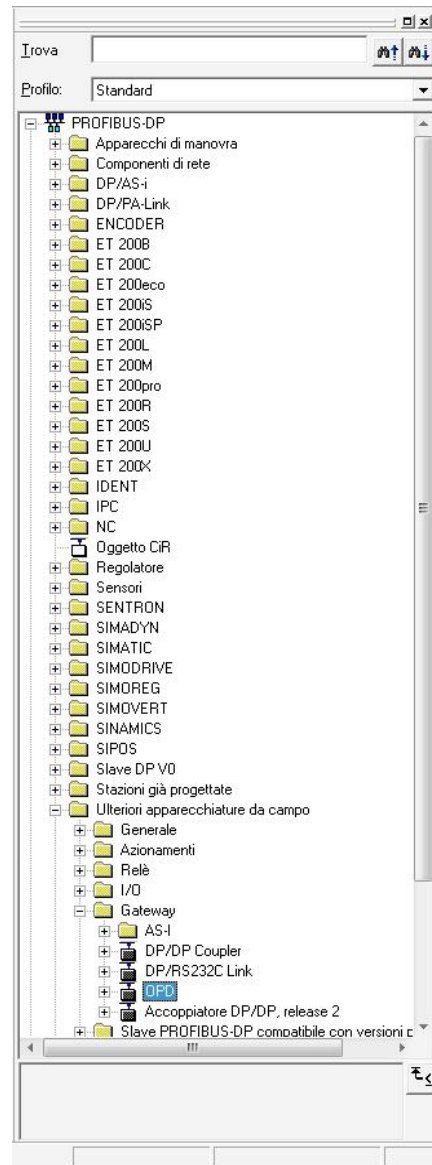


- Browse to the file's directory in the next dialog and then click "Install". You can choose whether to search for the GSD files in the directory or in a STEP7 project. During the installation process, you may receive (error) message support (indicating, for instance, that a certain GSD file is already installed). Once the installation is complete, you can call up a record. Where necessary, use the Online Help ("Help" button).



## 2. Add the driver to the PROFIBUS network

- Select in the catalog tree PROFIBUS-DP/Additional field devices/Gateway/OPD



- Insert the driver to the profibus network. Configure the Profibus node address and speed of network as in the parameters of the driver.

**Proprietà slave DP**

Generale

Unità

N. di ordinazione: File GSD (file tipo slave): OPD.GSD

Famiglia: Gateway

Tipo slave DP: OPD

Identificazione: OPD

Indirizzi

Indirizzo di diagnostica: 2046

Nodo/sistema master

PROFIBUS... 3

**Proprietà - Interfaccia PROFIBUS OPD**

Generale Parametri

Indirizzo: 3

Velocità di trasmissione: 1.5 Mbit/s

Sotto-rete:

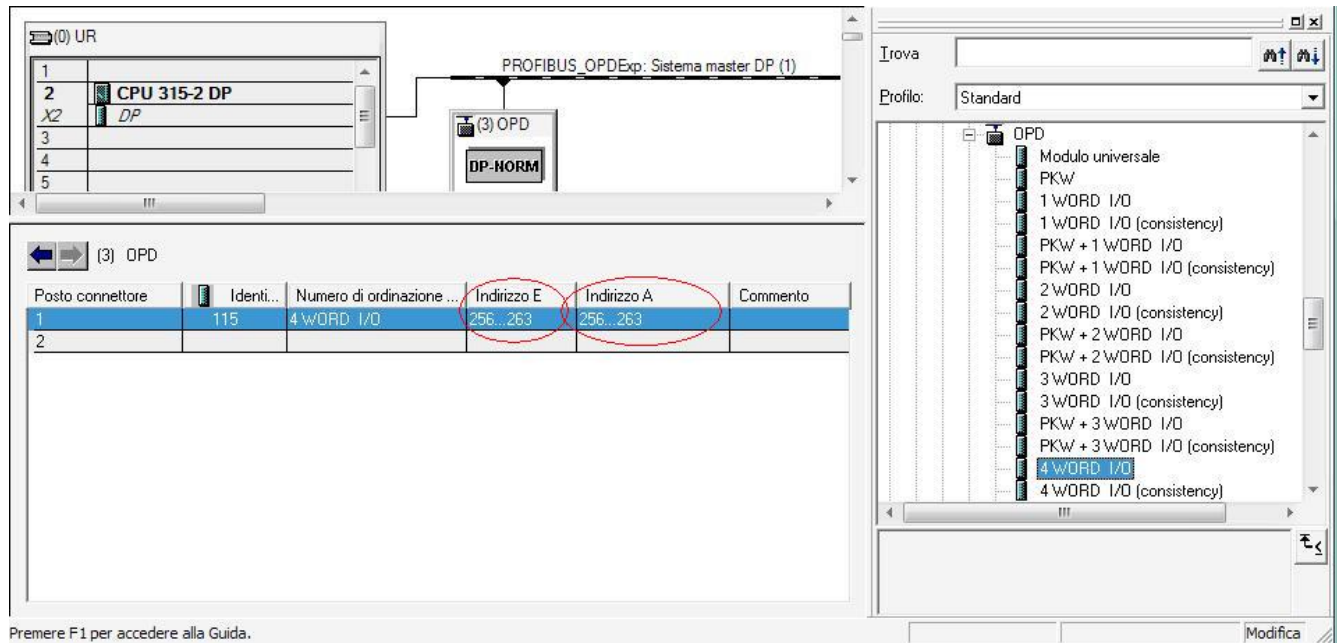
— non collegato/a in rete —

PROFIBUS\_OPDExp 1.5 Mbit/s

Nuova... Proprietà... Cancella

OK Annulla ?

- Add the words that we use to communicate with the driver. Take de Address for change of information because with this, the PLC make the communication with driver.



### 3. Setting of OPD

1. Take the configuration of manual Positioning System - 1.1 Factor Group, 1.2 Profile velocity mode, 1.3 Homing Mode, 1.4 Profile position mode, 1.5 Set-point timing, 1.6 Position Targets, 1.7 Frequency Mode.
  2. Go to OPDExplorer/Open drive/Fieldbus/Profibus/New\_mange...
- Node Configuration
    - EN\_FLDBUS: Profibus
    - EN\_FLDBUS\_REF: YES
    - NODE\_SLAVE\_ADDRE: This number must match the hardware configuration in SIMATIC Manager Step7
    - DATA\_CONSISTANCE: NO
    - EN\_ACYCLIC\_DATA: NO
    - EN\_BIG\_ENDIAN: YES
  - Save the data in Flash (C63=1), Switch the drive off and then on again.
  - Check the parameter P93. This parameter must match with the number of Profibus network speed.
  - Cyclic Mapping.
    - Rxx\_INDEX: Here is where Siemens PLC write parameters. You must to write the

number of object you want to see. This numbers you can to find in Dictionary of Canopen Objet because they have the same name. (Profibus DP Attachment -2.2.4 Dictionary of Canopen Objects)

- Txx\_INDEX: Here is where OPD write parameters. You must to write the number of object you want to see. This number you can to find in Dictionary of Canopen Objet because they have the same name. (Profibus DP Attachment -2.2.4 Dictionary of Canopen Objects)

Attention: Any Rxx\_INDEX o Txx\_INDEX use words then the total number of words must be the same as the settings in Hardwar of SIMATIC Manager Step7.

Ej.- 3 Words for Rxx\_INDEX and 4 Words for Txx\_INDEX You need to put in the hardware configuration 4 words. Always the largest number of two.